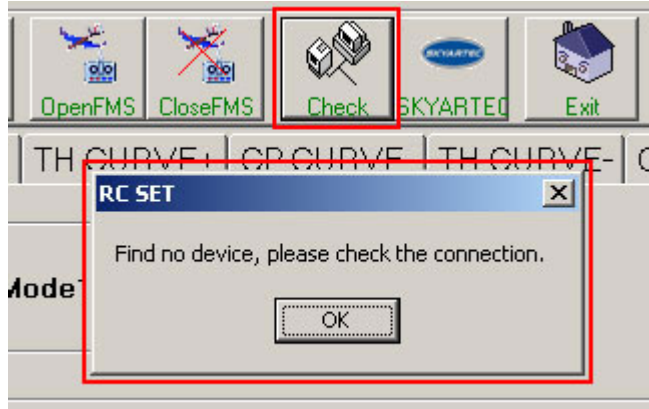


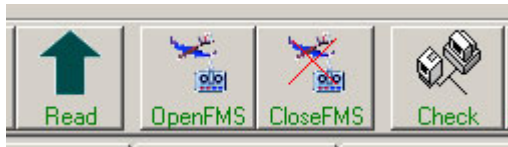
# SKY703 QUESTIONS ANALYSIS

## 1. Find no device connecting to remote control?



- (1).Please change another USB jack to try.
- (2).Come to the "Device Manager", check if there is a COM port named "CP2102 USB to UART Bridge Controller" and its number less than 9.
- (3). Please check if the driver of "Device Manager" is well installed or not (Browse the page 4 -9 from sky703 introduction manual-EN)

## 2 , Cannot run the FMS?



If you click "OpenFMS" with no reflection, please click "CloseFMS" first, then click "OpenFMS" that is OK.

Remark: the reason is that you close the FMS program directly last time, rather than clicking the "CloseFMS" to end the program.